

140 150 160 170

60

70

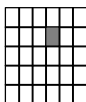
80

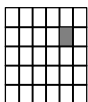
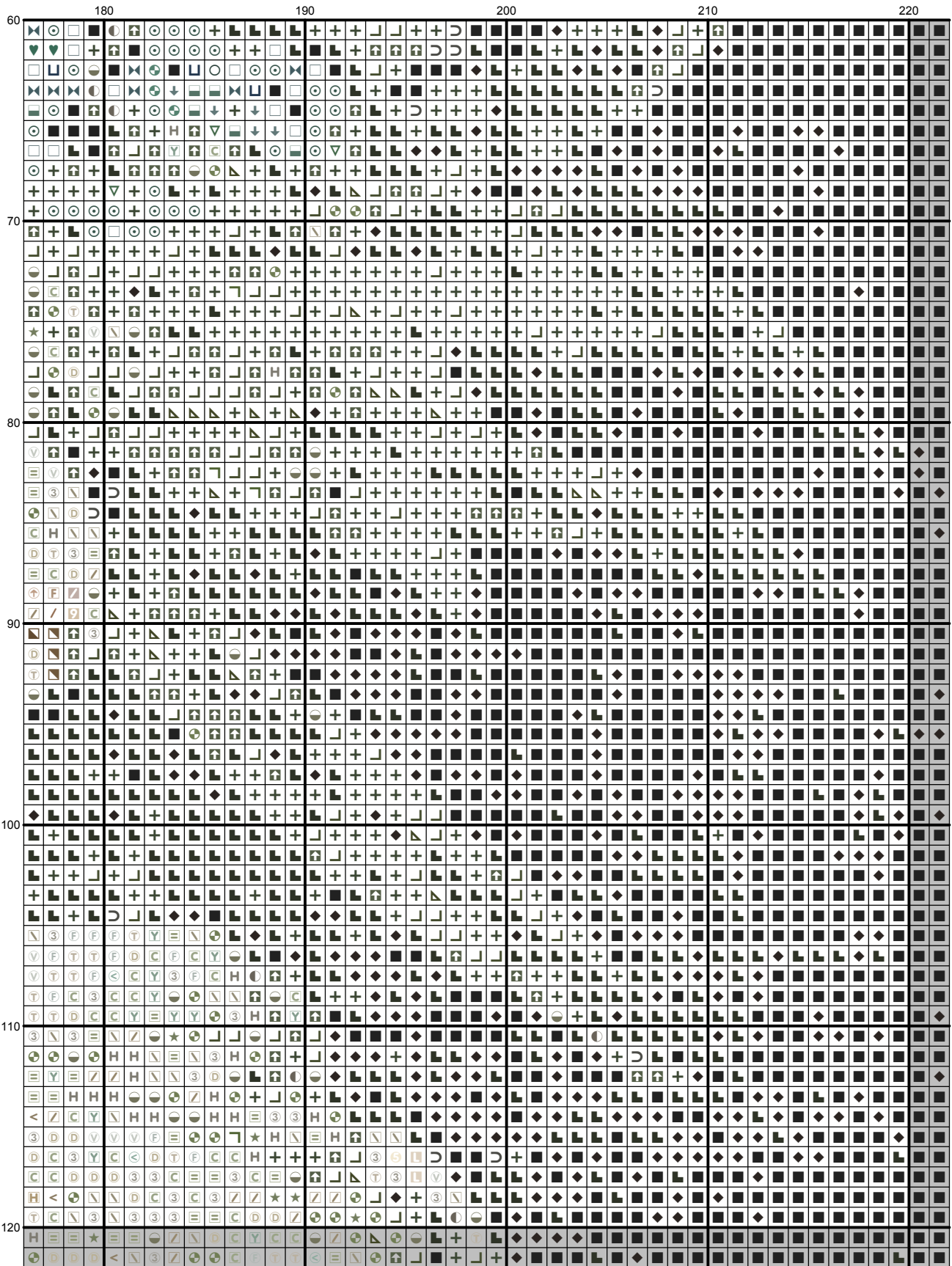
90

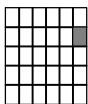
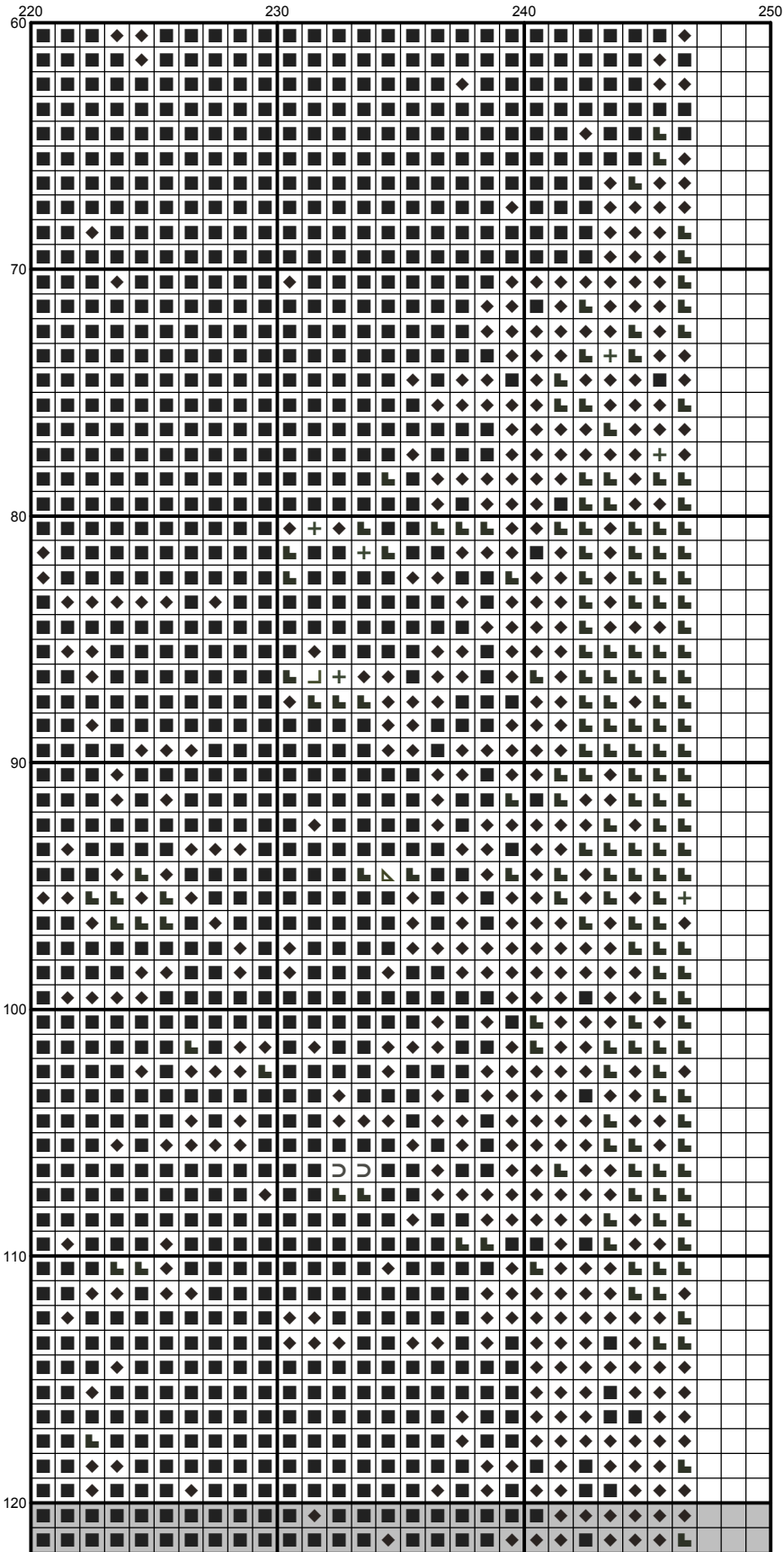
100

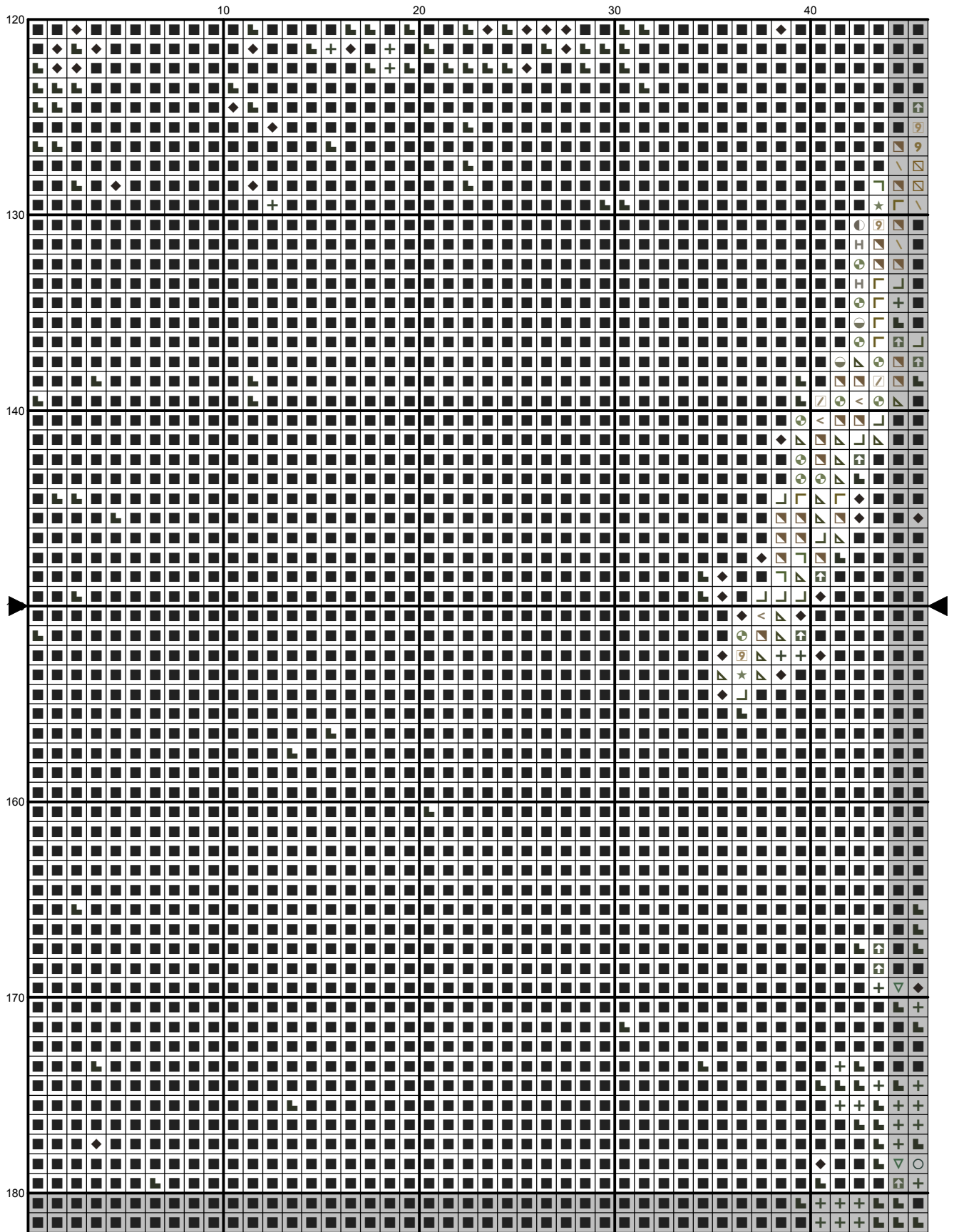
110

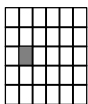
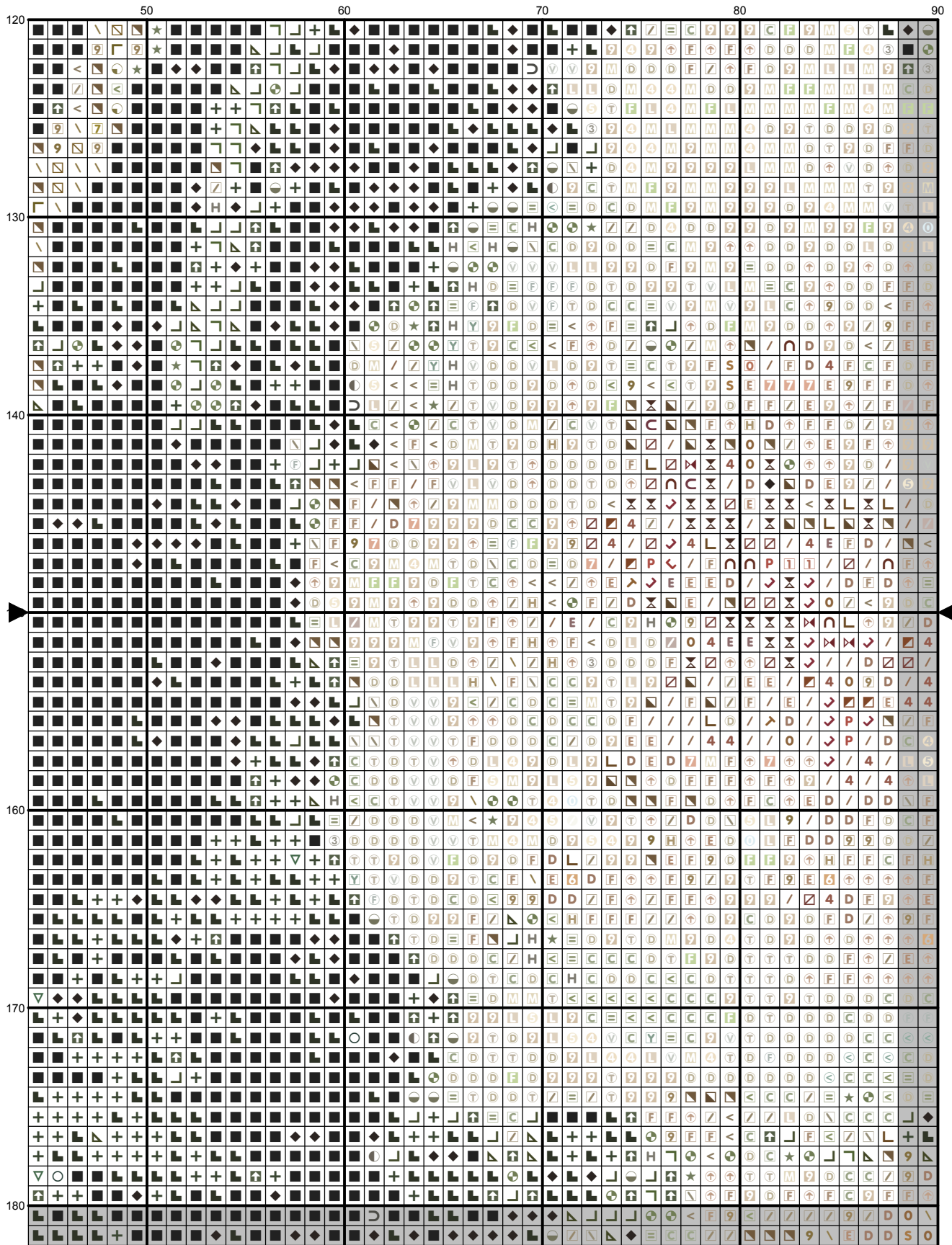
120

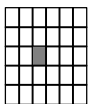
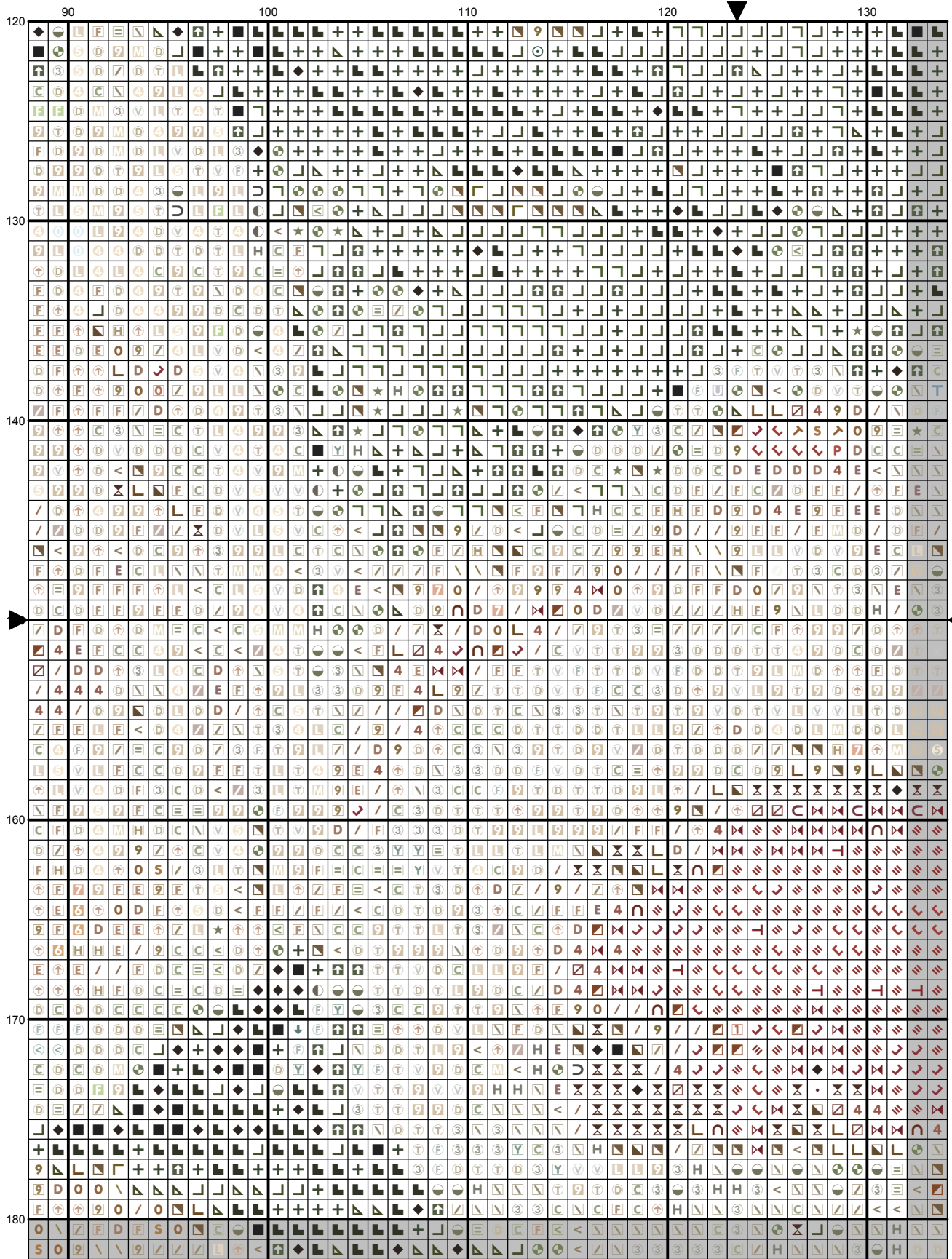


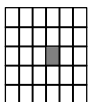
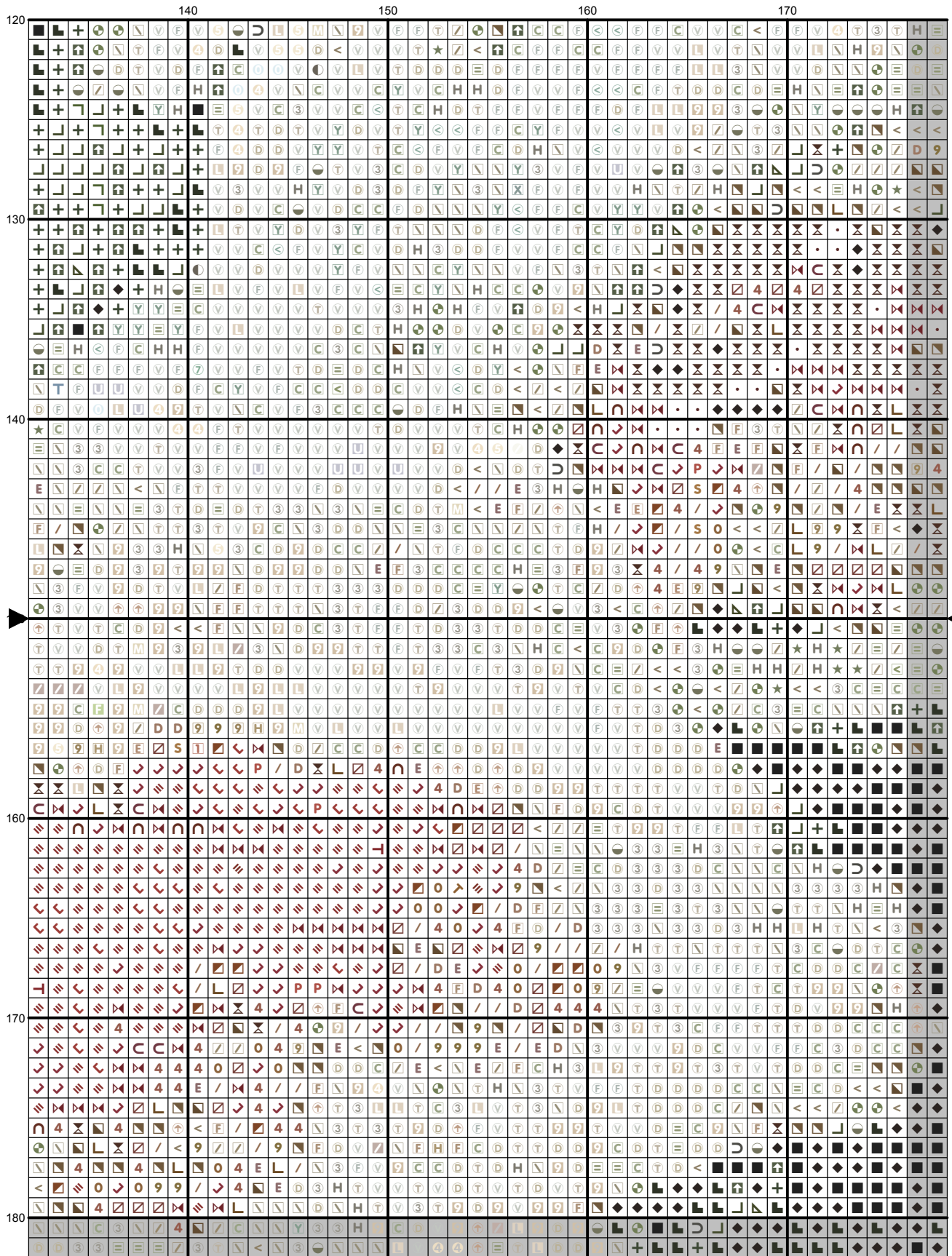


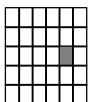
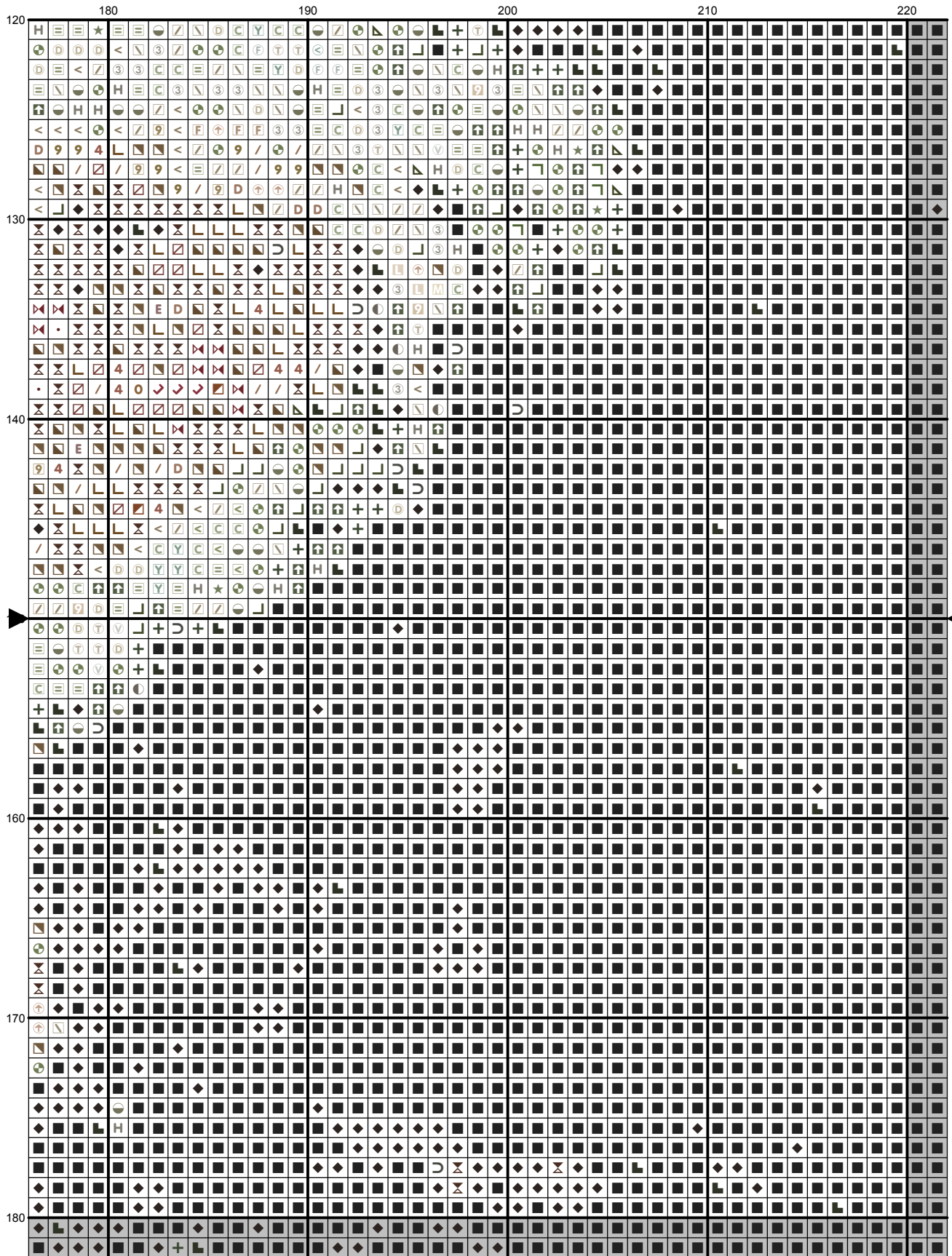


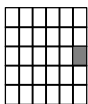
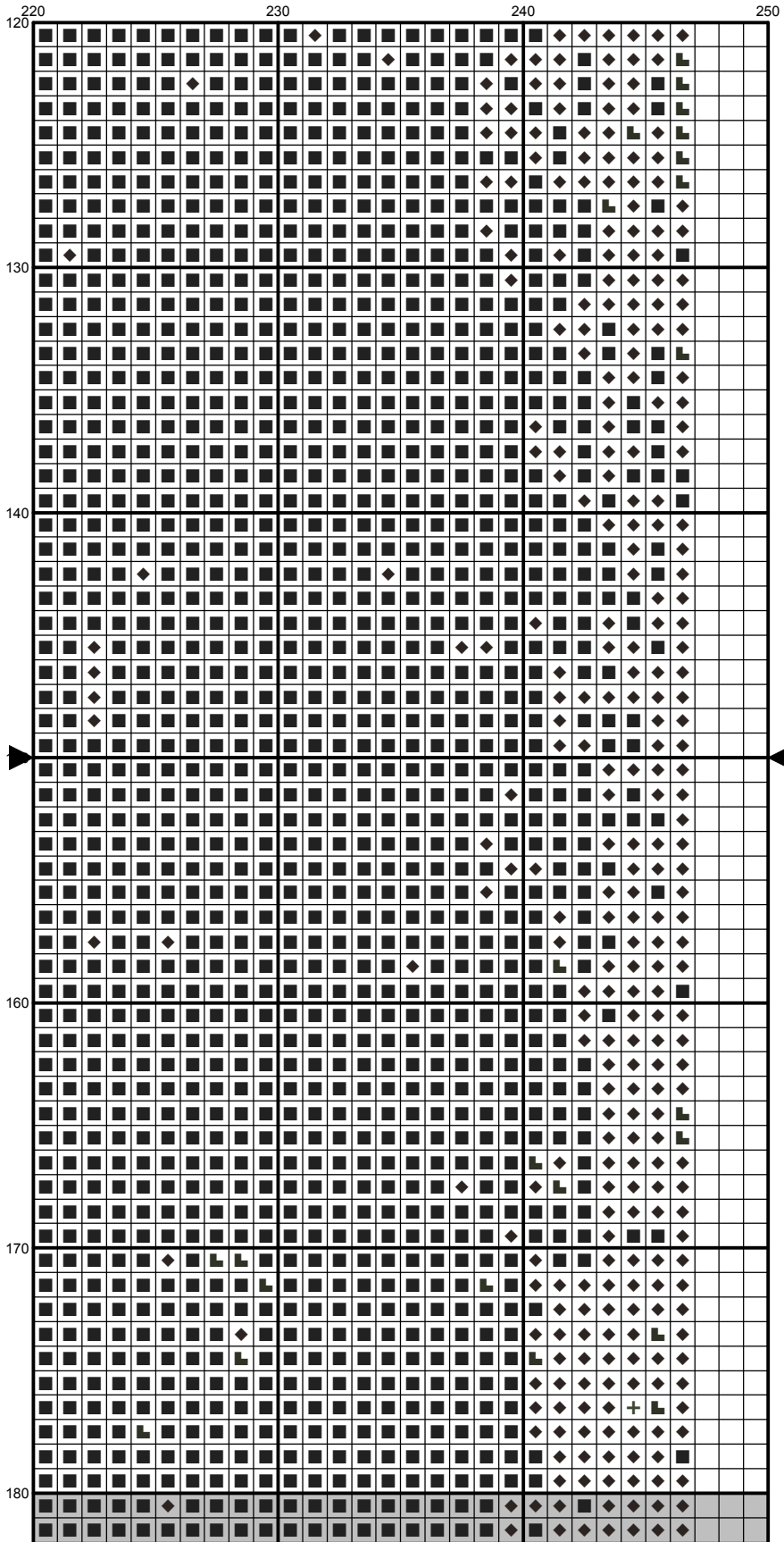


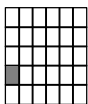
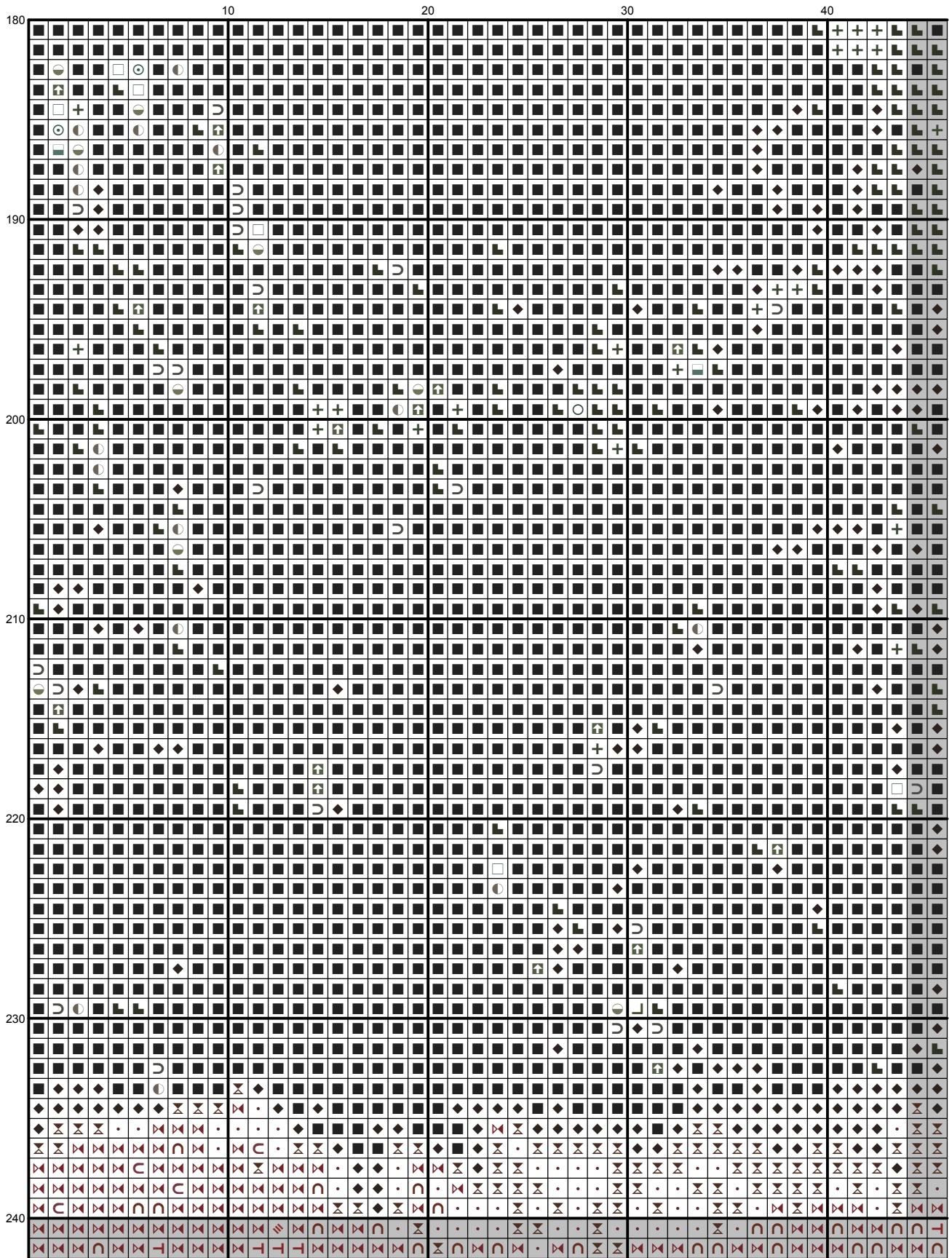


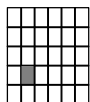
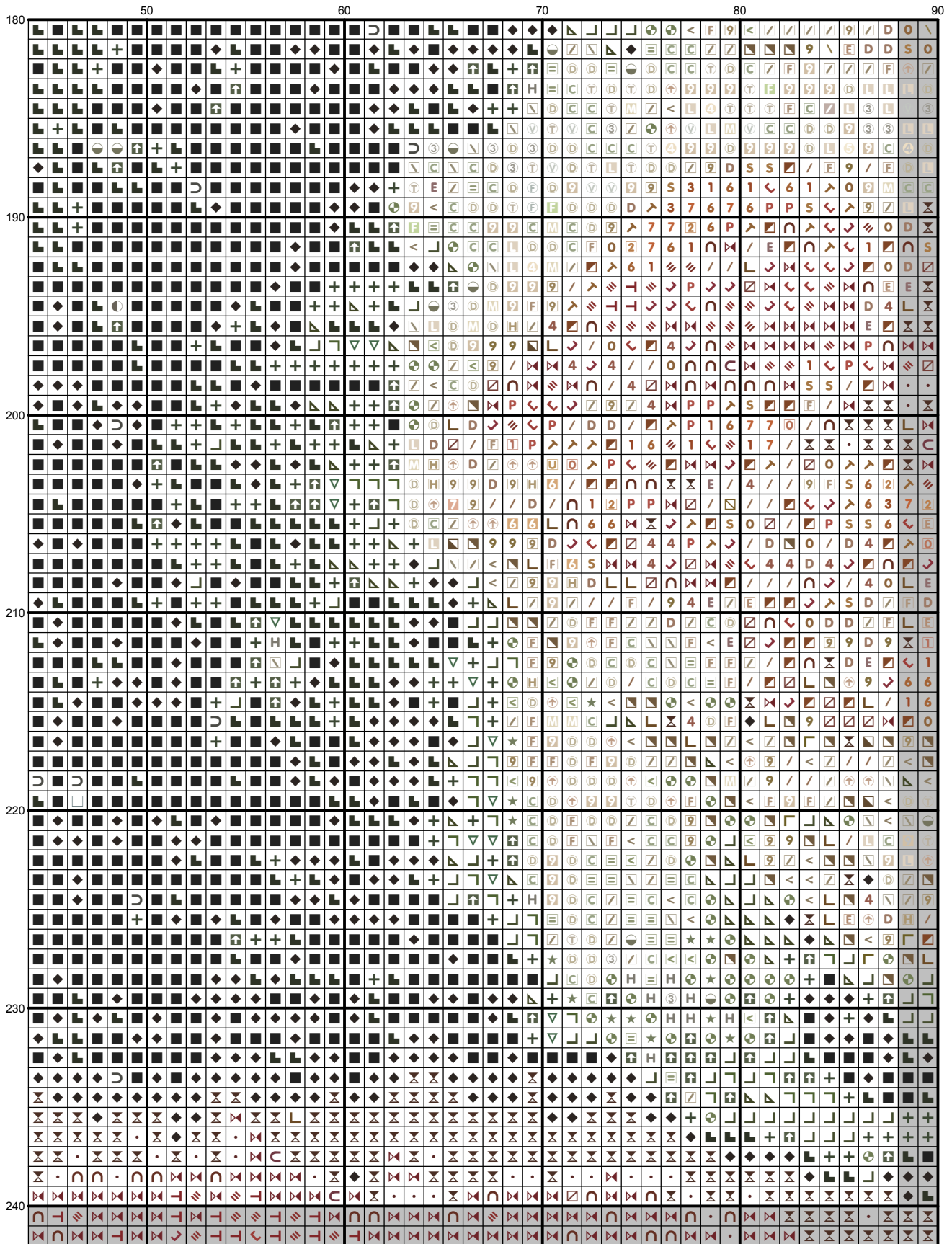


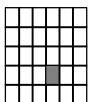
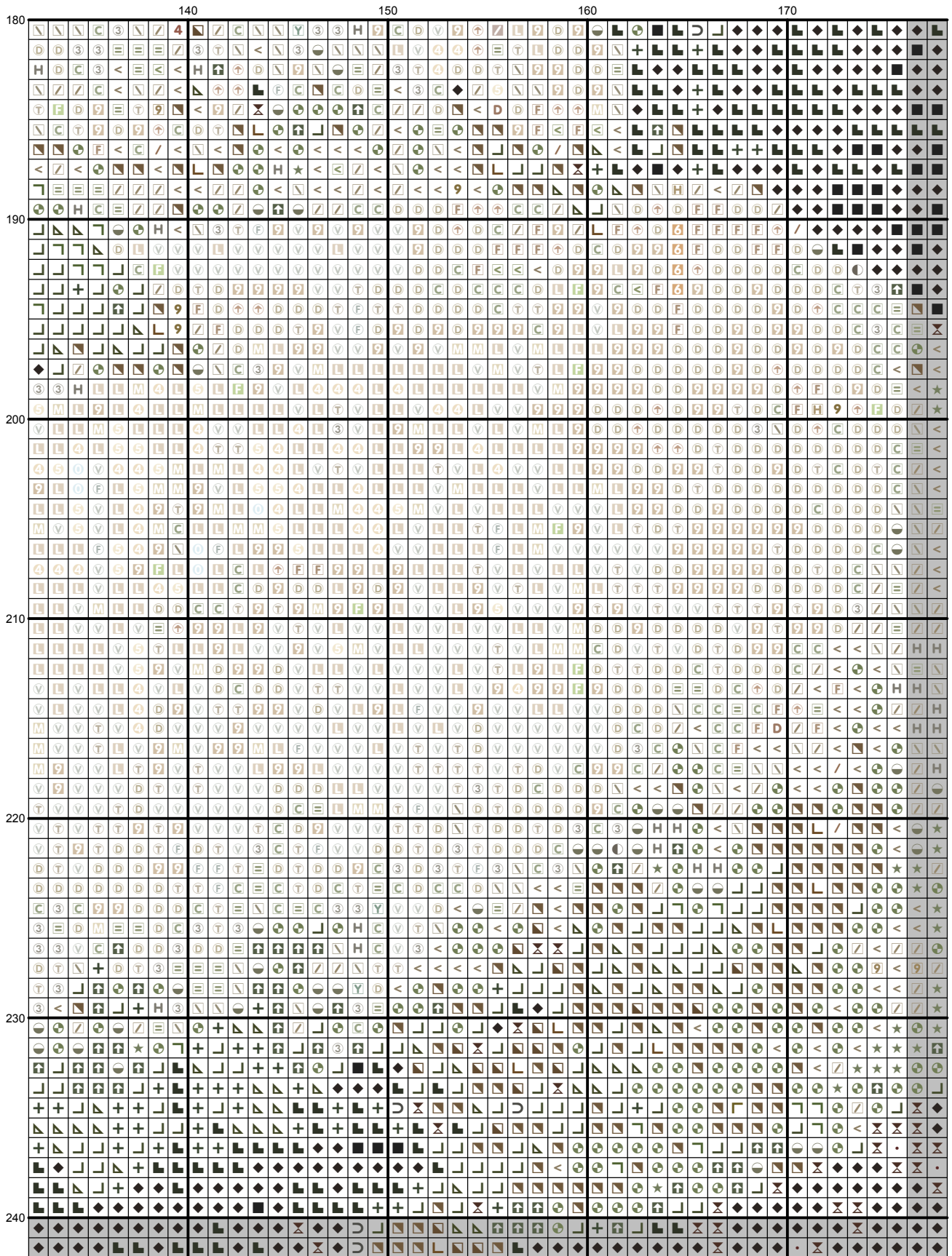


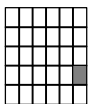
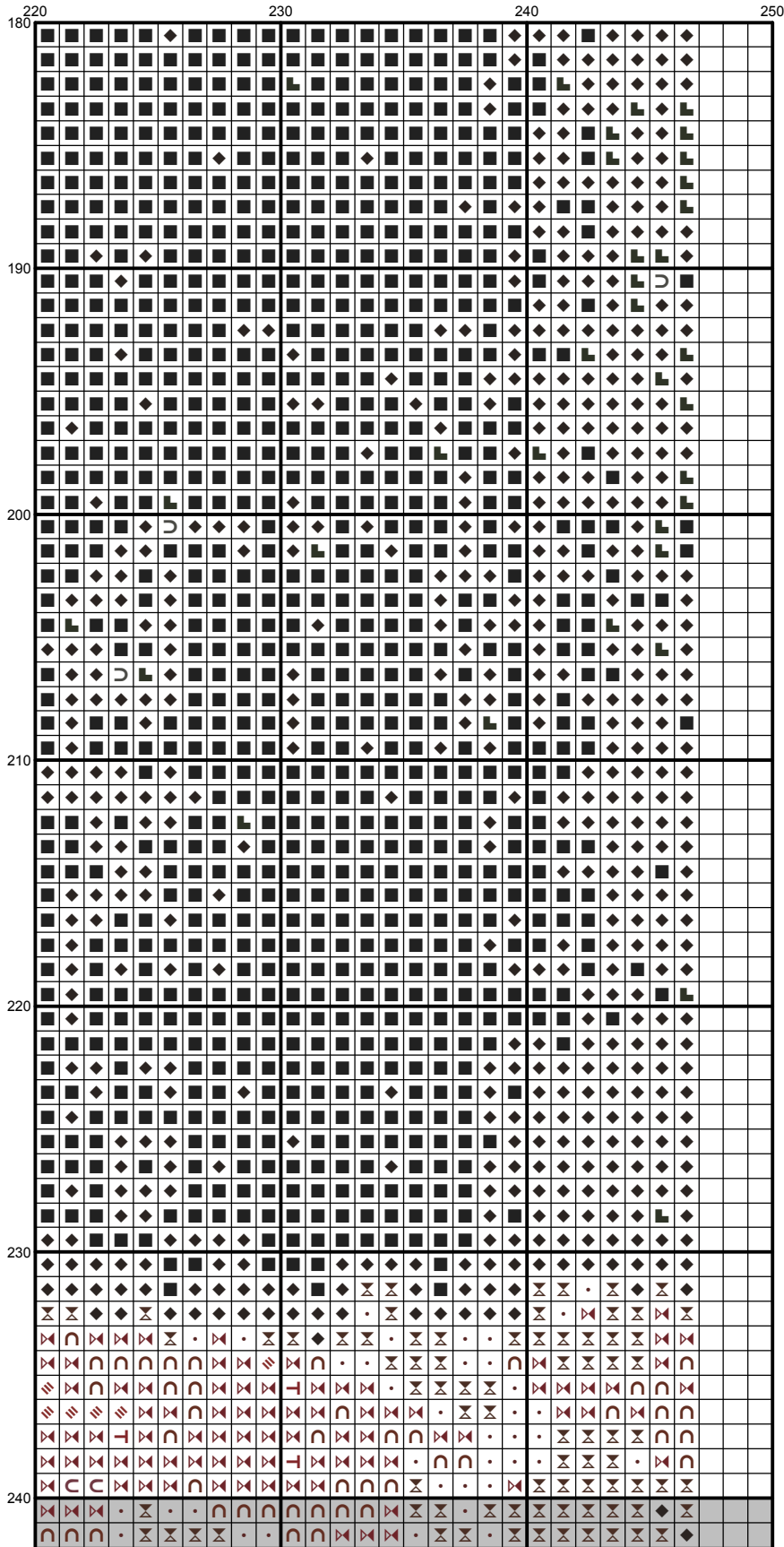


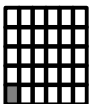
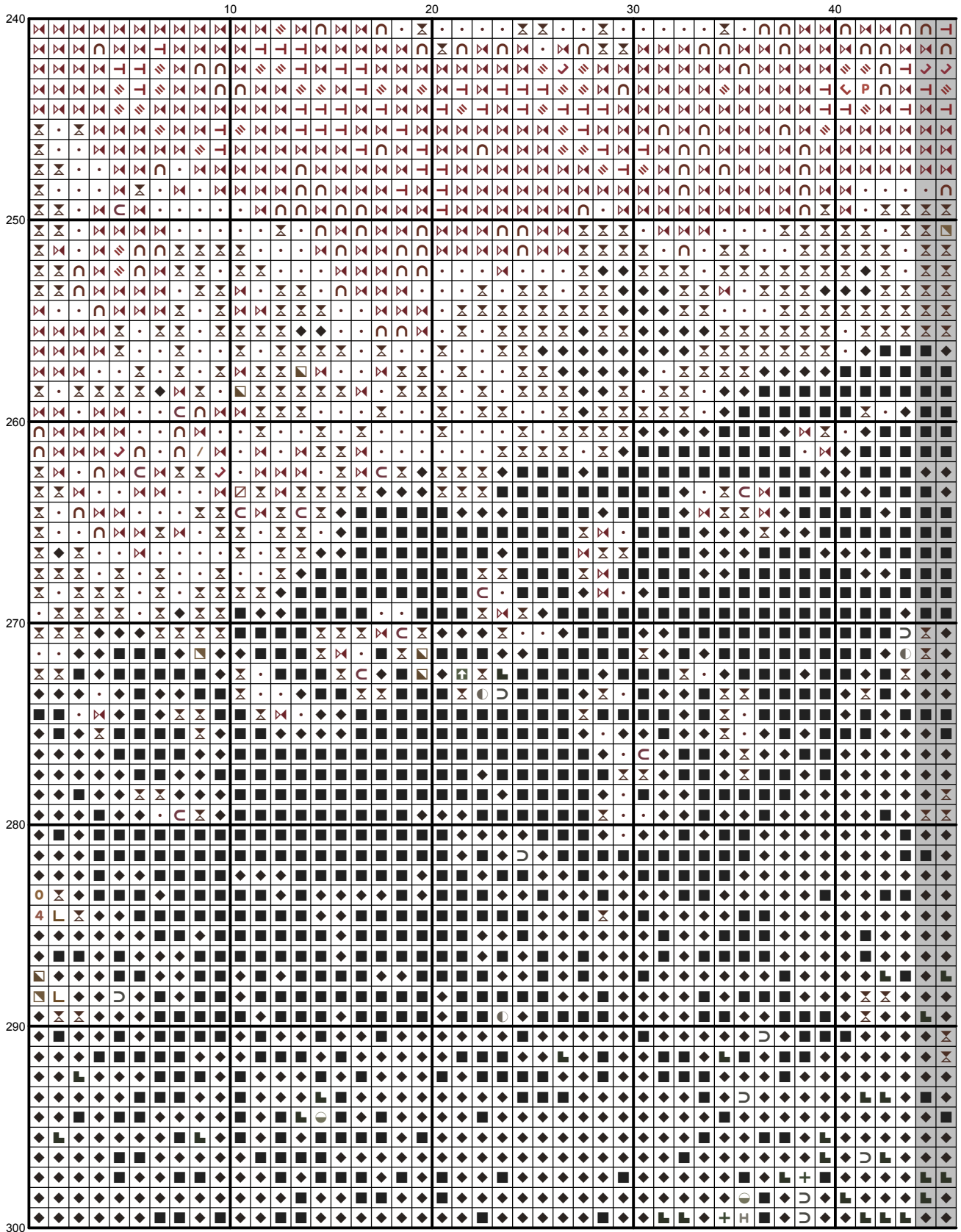


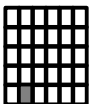
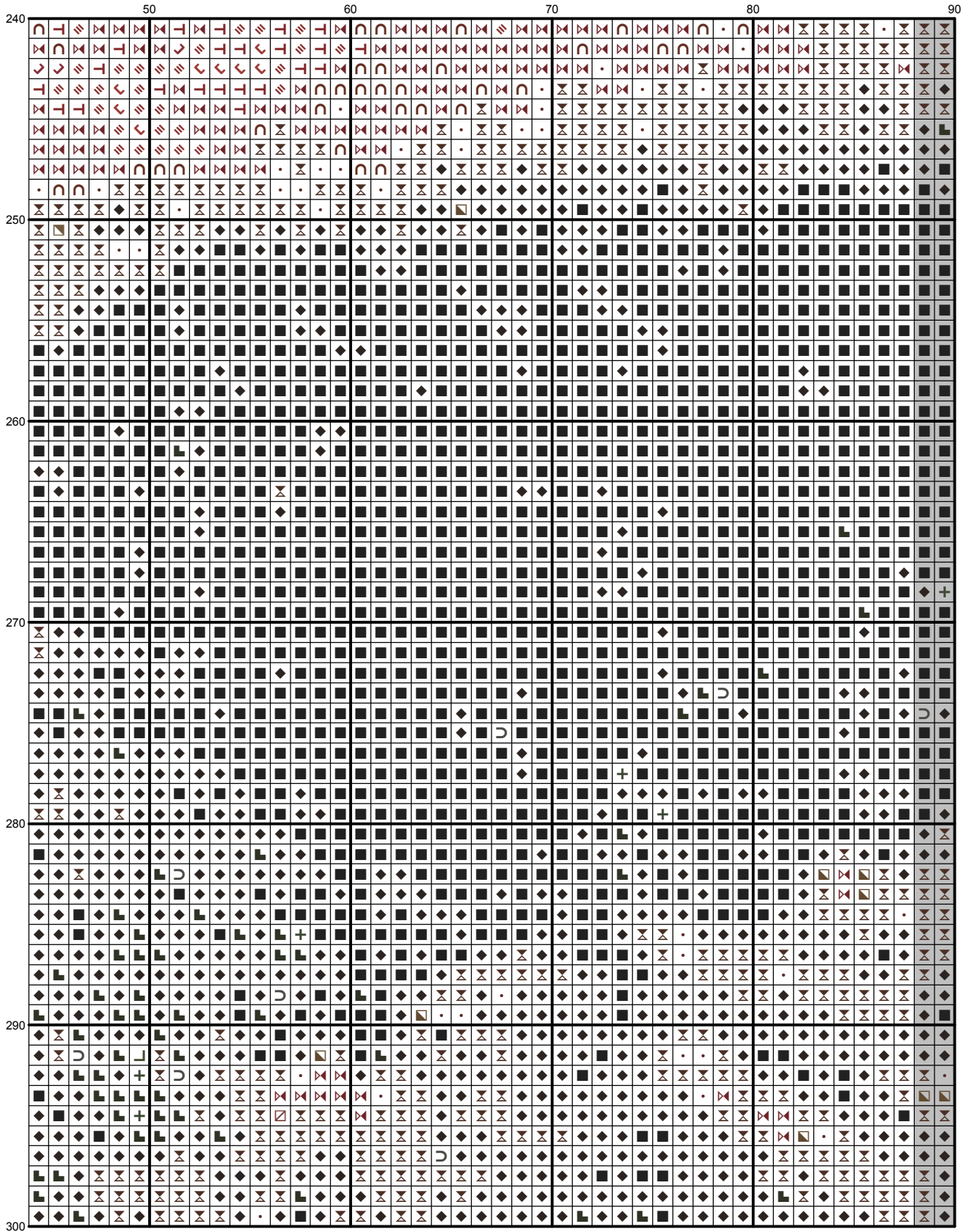


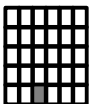
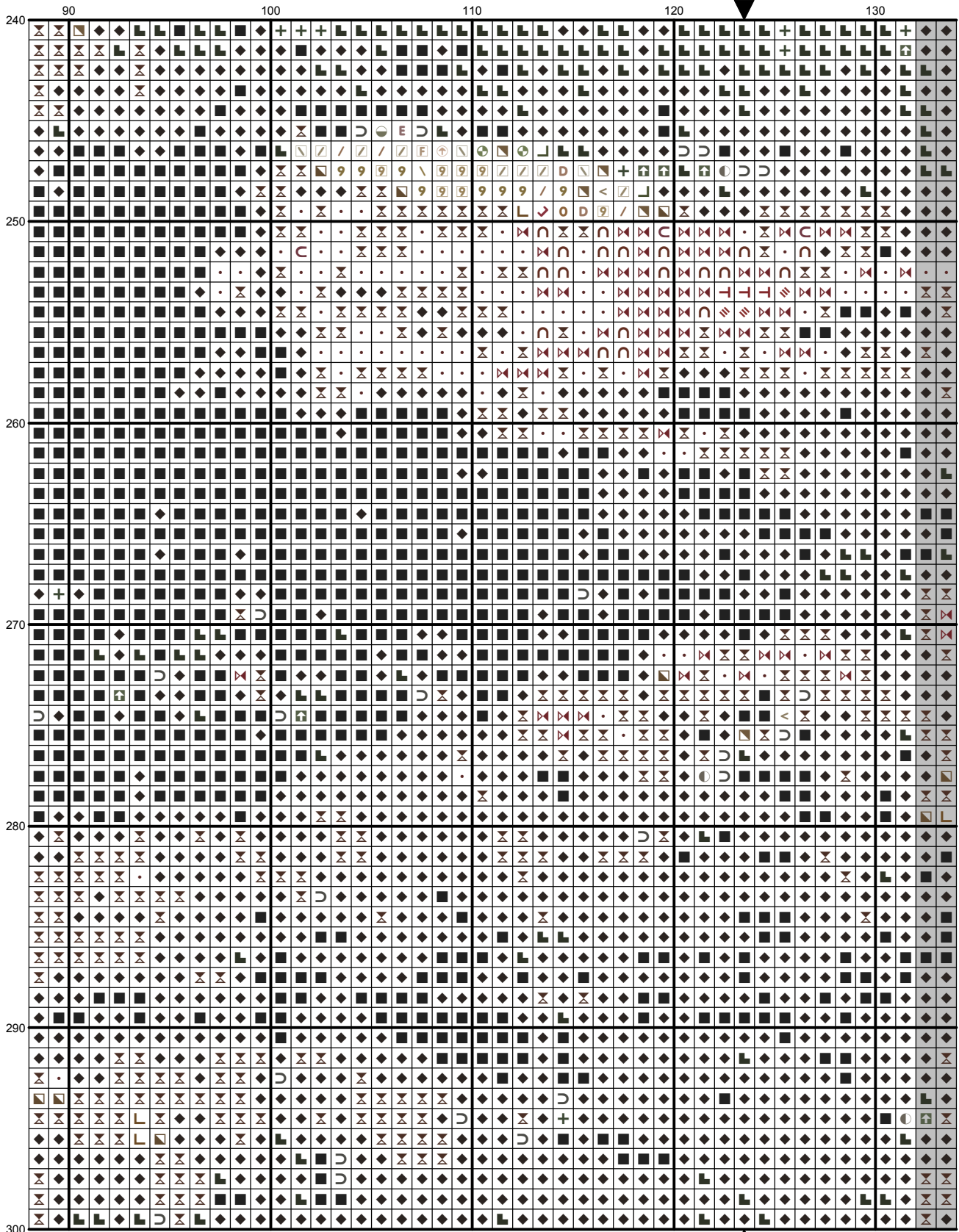


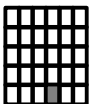
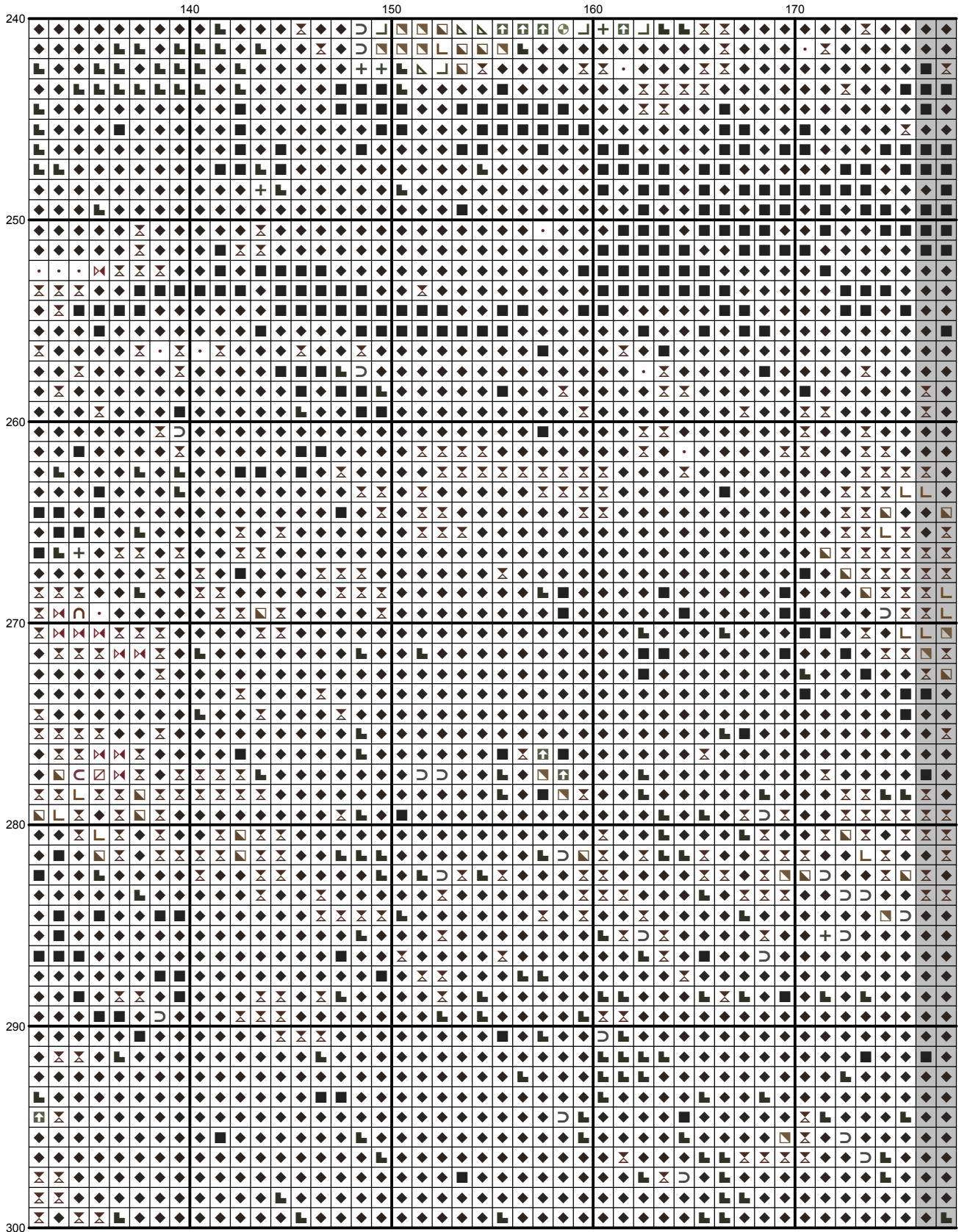


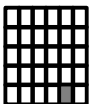
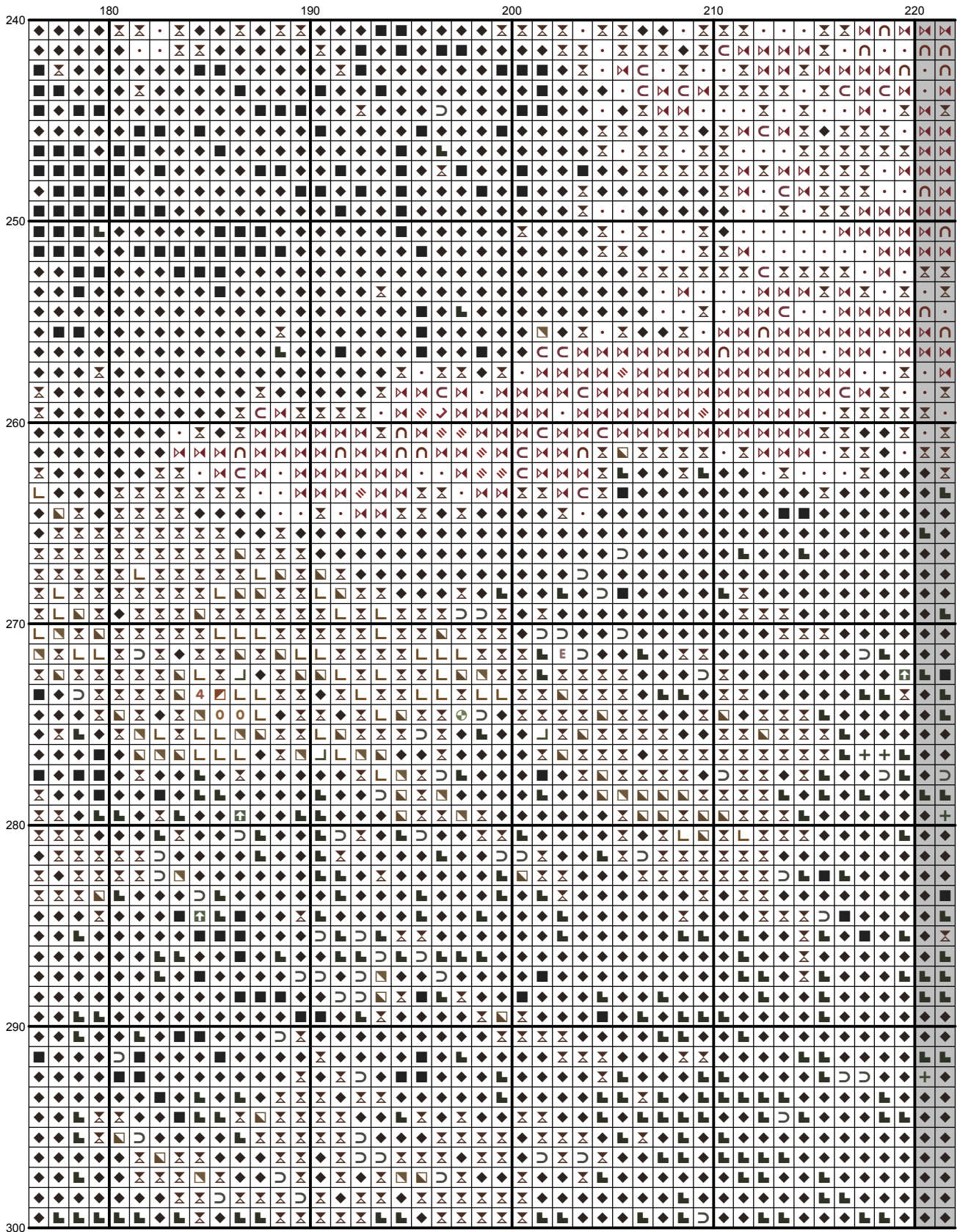


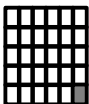
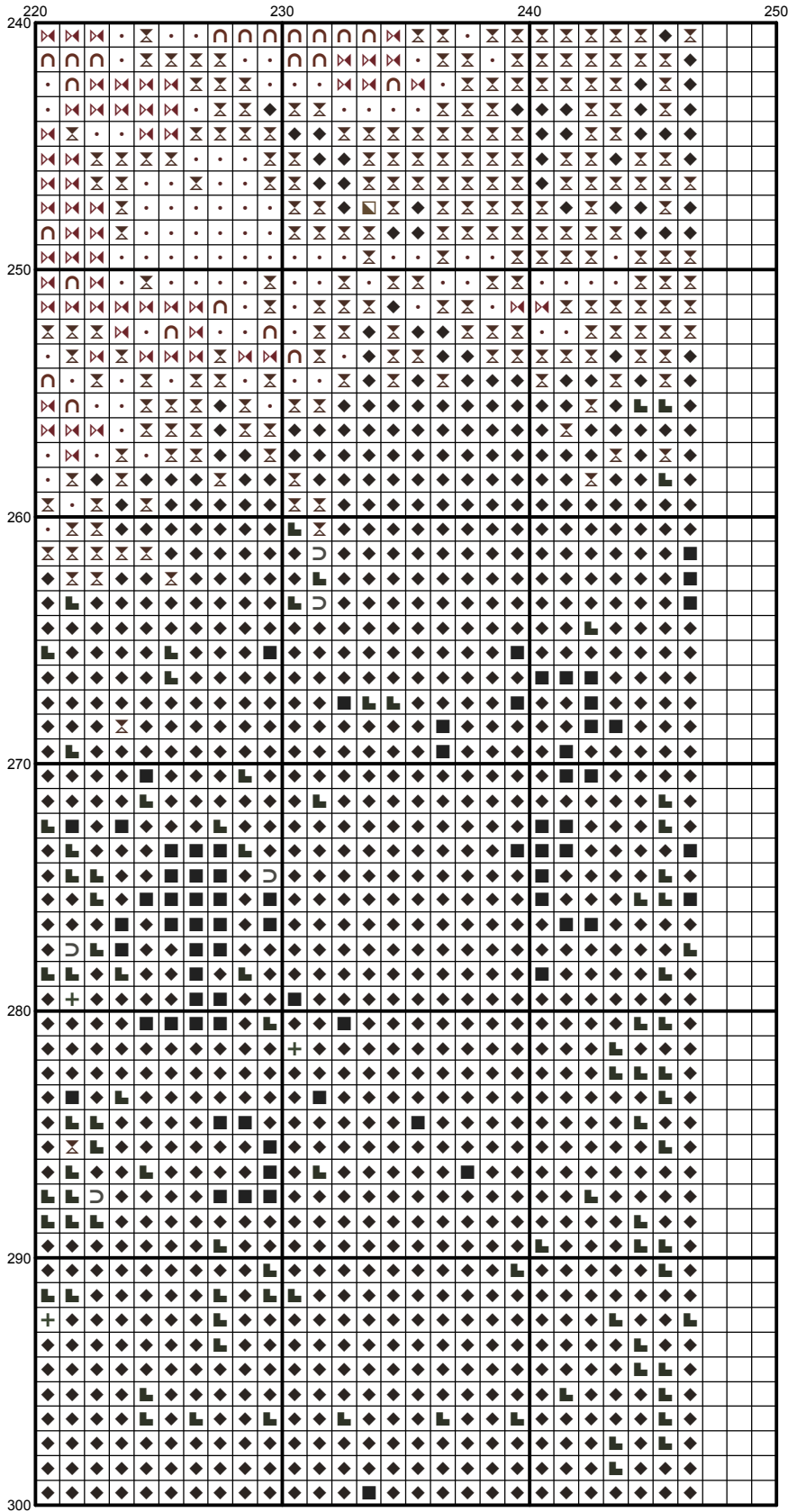












Instructions and Symbol Key for Design "Vase with Peonies"

Fabric: 14 count Aida

Stitches: 247 x 300 **Size:** 17.64 x 21.43 inches or 44.81 x 54.43 cm

Colours: DMC

Use 2 strands of thread for cross stitch

Sym	No.	Colour Name	Sym	No.	Colour Name
0	167	Dark mustard brown	⌘	221	Mars red
∩	300	Mahogany	1	301	Squirrel brown
■	310	Black	C	315	Antique lilac
⚡	355	Brown red	P	356	Medium terracotta
▽	367	Bay leaf green	⊞	369	Bamboo leaf green
9	370	Medium mustard	\	371	Green plains
⤴	420	Hazelnut	U	422	Light oak
▣	434	Cigar brown	6	435	Tabacco brown
2	436	Teddy brown	⊞	453	Turtledove grey
○	500	Ivy green	⊙	501	Pond green
▣	502	Blue green	⊞	503	Thyme green
➔	517	Dark wedgewood blue	+	520	Dark fern green
★	522	Trellis green	≡	523	Ash green
⊞	524	Light grey green	⊞	535	Stone grey
⊞	597	Iceland blue	⊞	598	Lagoon turquoise
▣	610	Dark golden brown	▣	611	Sisal brown
9	612	String brown	H	613	Rope brown
<	642	Earth grey	⊙	644	Light green grey
⊞	645	Dark steel grey	●	646	Platinum grey
H	647	Rock grey	③	648	Pepper grey
6	712	Cream	⊞	732	Bronze green
7	733	Golden green	6	738	Sahara cream
U	762	Pearl grey	M	822	Cotton cream
L	830	Green oak brown	▣	831	Green bronze
D	841	Deer brown	⊞	842	Beige rope
⊞	898	Teak brown	⚡	918	Dark red copper
▣	924	Dark pearl green	↓	926	Grey green
⊞	927	Oyster grey	⊞	928	Light pearl grey
←	931	Blue grey	T	932	Seagull blue
L	934	Algae green	▣	936	Oaktree moss green
7	950	Beige	⊙	3012	Marsh green
●	3022	Elephant grey	▣	3023	Light platinum grey
⊞	3024	Pale steel grey	▣	3032	Dark antique silver
⊞	3033	Antique silver	⊞	3051	Olive tree green
⊞	3052	Silver green	⊞	3053	Tweed green
⊞	3064	Cinnamon brown	⊞	3072	Pale pearl grey
⊞	3346	Hunter Green	◆	3371	Ebony
↘	3721	Earth pink	⊞	3750	Deep petrol blue
⊞	3756	Cloud blue	⌘	3768	Storm grey
4	3772	Rosy tan	7	3776	Dark nutmeg brown
⊞	3777	Leather red	A	3779	Pale terracotta
⊞	3782	Gingerbread brown	X	3809	Deep turquoise
↑	3810	Dark turquoise	⊞	3813	Light green
♥	3815	Eucalyptus Green	⊞	3816	Snake green
⑦	3817	Polar tree green	3	3826	Golden brown
S	3828	Oaktree brown	↘	3830	Red terracotta
W	3856	Pale beechwood	·	3857	Dark red wine
▣	3858	Medium red wine	⊞	3859	Clay red

E	3861	Light taupe	/	3863	Otter brown
E	3864	Light mocha brown	⊙	3865	Winter white
L	3866	Garlic cream	⊙	ECRUT	ECRUT

This chart has been designed and printed with our best intentions of being without mistakes. However, the possibility of human error, printing mistakes or the variation of individual stitching does exist, and we regret that we cannot be responsible for this.

Note: The shaded blocks on the chart represent overlapping stitches.
 Copyright © Classic cross stitch 2011 All rights reserved.